

www.pemtron.com  
See The Invisible World.

# TROI-8800 CI Series

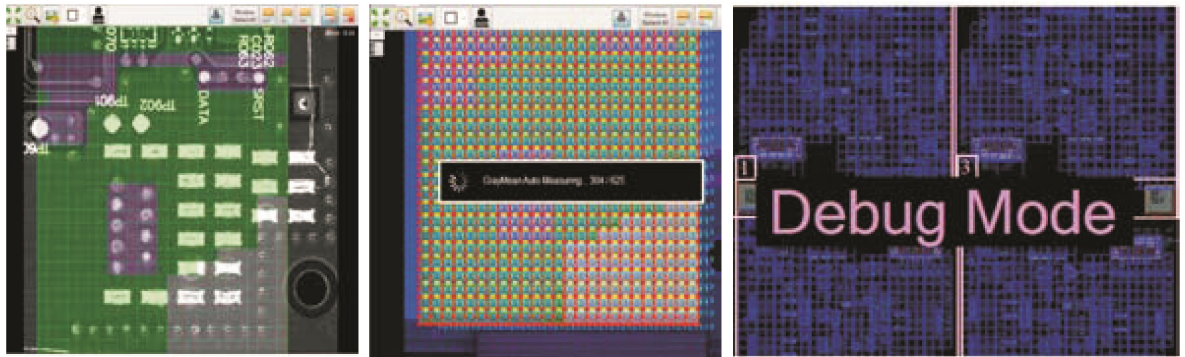
自动光学涂覆检测机



# TROI-8800 CI Series

## 自动教学&优化

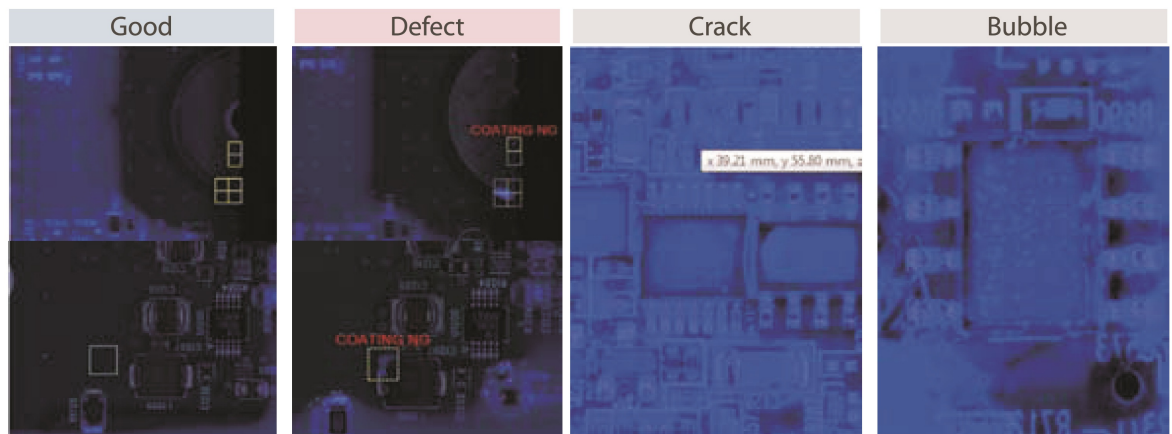
使用涂覆良好的PCB样板，系统自动识别和设定合理的参数，并使其作为实际生产的标准值



## 可靠的涂覆检测

编程简单，测试快速

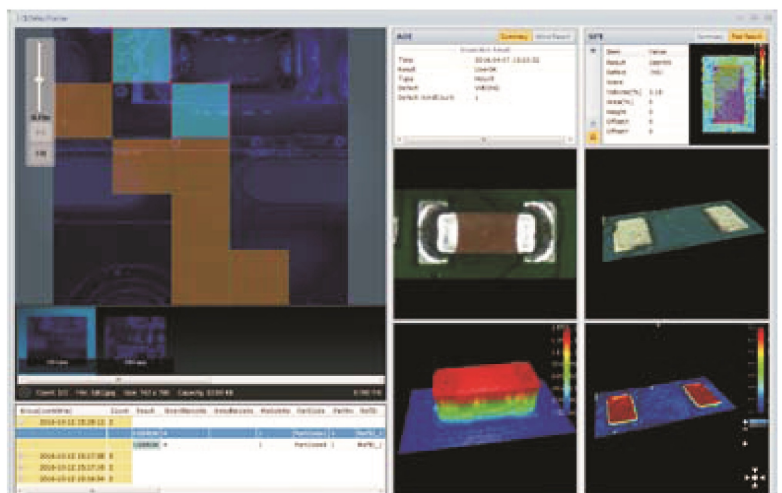
可准确的检测出裂痕，脏污，飞溅，气泡，涂覆厚度等不良类型



## 闭环功能 『SPI + AOI + CI』

实时监控&品质管控方案

PEMTRON 检测结果自动匹配系统用以提供各生产环节的直观监控

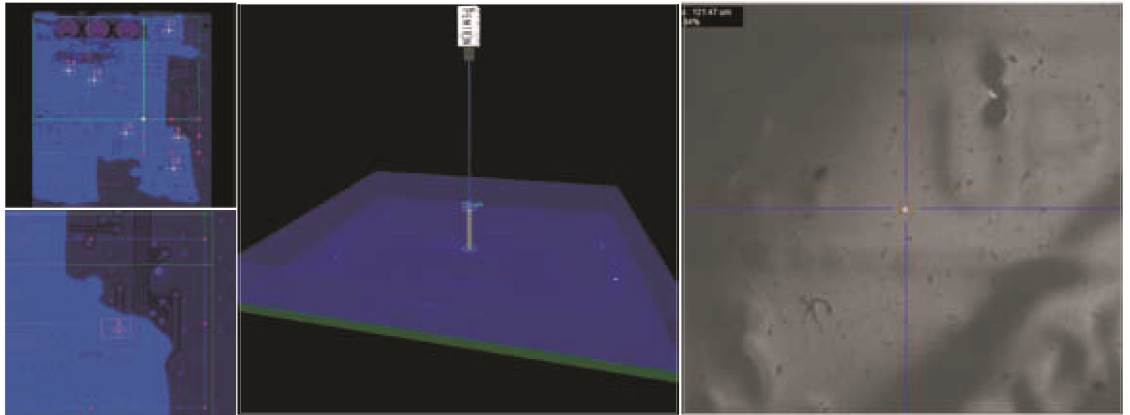




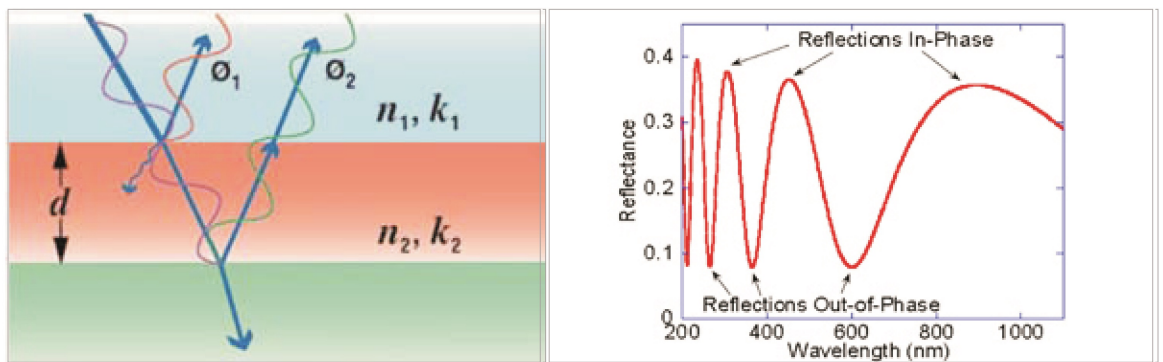
## TROI-8800 CI 系列 (自动光学涂覆检测机)

### 厚度测量

使用激光利用其反射原理来测量涂覆表面厚度

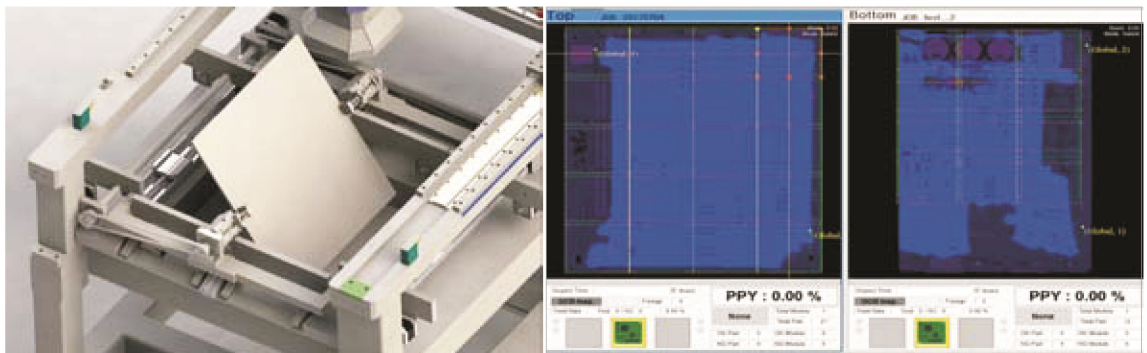


当光束到达两种不同材质的分界面时，它会部分地被反射。光的类波性使来自多个界面的反射相互干扰，导致反射光的波长光谱发生振荡。根据所产生的干扰图案，我们确定了不同材质之间的距离，即为我们要测试的涂覆厚度。



### 使用翻转模块可进行双面检测

简便快速的PCB自动翻转，可实现不出板、两面先后检测



# TROI-8800 CI Series (Conformal Coating Inspection System)

## SPECIFICATIONS

Model		TROI-8800CI	TROI-8800CIL
Camera Technology		camera module 4M (UV LEDs)	
Detection Types		coverage, non-coverage, cracks , bubble splashes, position , de-lamination	
Lighting		UV + RGB Lightning	
Resolution		10um	15um      18um
Inspection Speed		16.5cm <sup>2</sup> /sec	38.4cm <sup>2</sup> /sec      53.5 cm <sup>2</sup> /sec
FOV (Field of View)		20.5 x 20.5 mm	30.7 x 30.7 mm      36 x 36 mm
Motor Type		Gantry Type	
PCB Specification	Working Area	Min. 50x50mm (2x2inch) Max. 290x330mm (11x13inch)	Min.50x50mm (2x2inch) Max. 470x510mm (18x20inch)
	Coating Thickness Measure (Option)	Min.50x50mm Max.400x380mm(16x15inch)	
	PCB Thickness	0.4 – 7.0 mm	
	Top Clearance	60mm	
	Bottom Clearance	60mm	
Installation Requirement	Electrical Requirements	220 – 240 VAC, 50/60 Hz	
	Air Requirement	5 Kgf/ cm <sup>2</sup>	
	Power Consumption      Standard Type	1.5kW (6.5A Max @ 220V AC)	1.8kW (8A Max @ 220V AC)
Control Unit	Control Method	PC Based Control (Windows 7, 64bit)	
	Monitor	24" LED Panel	
Operating	Operating Temperature	20 - 30 °C (68 – 86 °F)	
Machine Dimension	W x D x H	900 x 1070 x 1545mm (35 x 42 x 61 inch)	1100 x 1220 x 1545mm (43 x 48 x 61 inch)
	/ Weight	/ About 450kg (992 lbs)	/ 500kg (1102 lbs)
Options		Barcode Reader (1D & 2D) / Touch Panel / UPS(uninterrupted power supply)	

\* Specifications subject to change without notice.



**PEMTRON TECHNOLOGY MEXICO, S de RL de CV**  
Nicolas Bravo #3647, Col. Miguel de la Madrid, Zapopan Jalisco, Mexico CP: 45239  
jaime.arreola@pemtron.com  
Tel: +52 1 333-157-0636

**PEMTRON TECHNOLOGIES ASIA PTE LIMITED**  
FLAT/RM 1704 17/F SINGGA COMMERCIAL CENTRE 144-151 CONNAUGHT ROAD WEST SAI YING PUN HK  
tao@pemtron.com  
Tel:+852-3590-5175

**PEMTRON TECHNOLOGIES (SHENZHEN) CO.,LTD**  
RM 409, B Build, GuoRen Building, No.5 Keji Central 3rd Road, Maling Community, Yuehai Street, Nanshan District, Shenzhen, P.R.China  
tao@pemtron.com  
Tel: +86-755-2165-9772

**PEMTRON VIETNAM**  
Landlord Room03, 12A floor, Viet A building, 09 Duy Tan, Dich Vong, Cau Giay, Hanoi.  
Tel: +82-2-2160-5011(Internet Phone)  
sy78go@pemtron.com



### PEMTRON CORPORATION

#1406, (Byuksan Digital Valley VI, Gasan-Dong) 219, Gasan digital 1-ro, Geumcheon-gu, Seoul, korea. 153-704  
Tel: +82 2 1833 5220  
Fax: +82 2 2627 3770  
sales@pemtron.com

### PEMTRON TECHNOLOGY,CORP

15111 S. Figueroa St., Gardena, CA 90248  
Tel: +1 800 850 8764(TROI)  
steve.wong@pemtron.com

### PEMTRON Europe GmbH

Kapellenstrasse 11  
85622 Feldkirchen bei Munchen  
Tel: +49 89 877 688 42  
spark@pemtron.com,  
mvielsack@pemtron.com