

www.pemtron.com
See The Invisible World.

EAGLE 3D 8800 TH Series

3D插件AOI(底部检测)



 PEMTRON

EAGLE 3D 8800TH Series

先进的高速度检测和测量技术

无阴影高速度检测和测量技术

EAGLE 9百万8投射3D AOI系统对PCB进行100%的2D和3D全检。结合2D技术，保障完全无阴影光学检测和低误报率，并保持高度灵活性的系统功能。

Moiré Technology



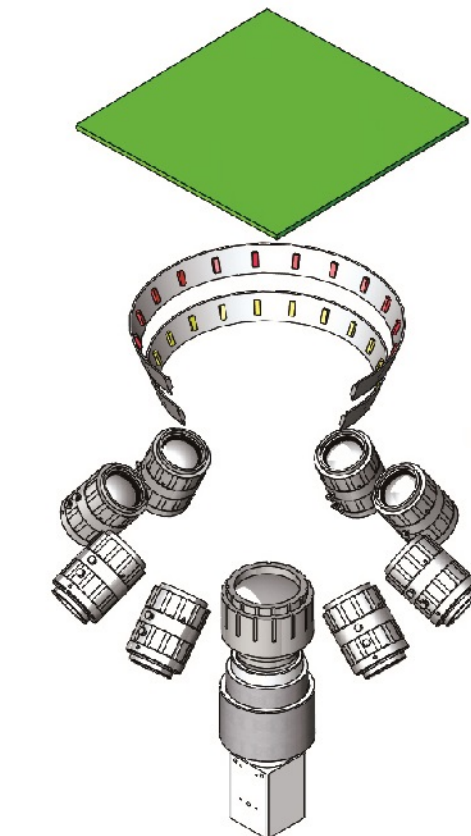
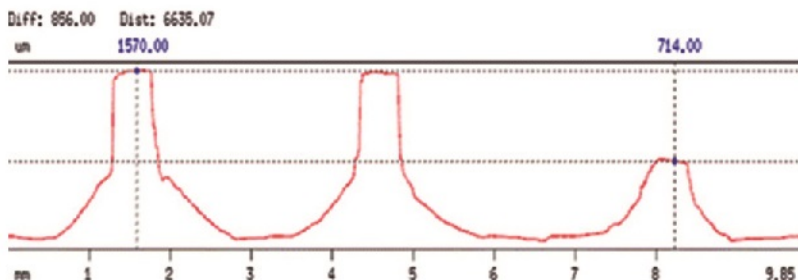
在 Pemtron 锡膏检测系统中已使用超过10年相位轮廓测量技术足以证明3D技术的先进性及有效性

- 8 投射光 + 3层2D光源
- 2D和3D同步检测算法
- 远心镜头提供高精度的检测
- 高配置CPU以保证图像处理
- 简单明了的用户界面
- 标准元件库管理系统
- 离线实时调试系统（选项）

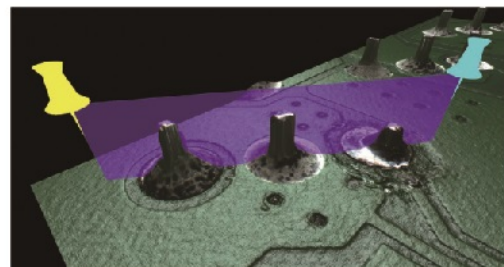
高速度检测技术

EAGLE 高速度选项使用先进的、强大的网络处理器、控制器和自主专项开发的9MP 15um 180fms 远心镜头的相机，可检测40.5cm²/sec。

最真实的3D图像与实时剖面分析



底部相机组件

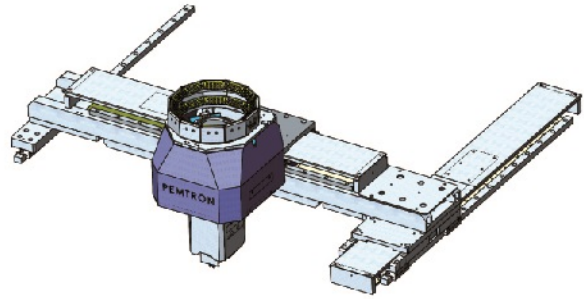


业界首台3D Through Hole检测设备

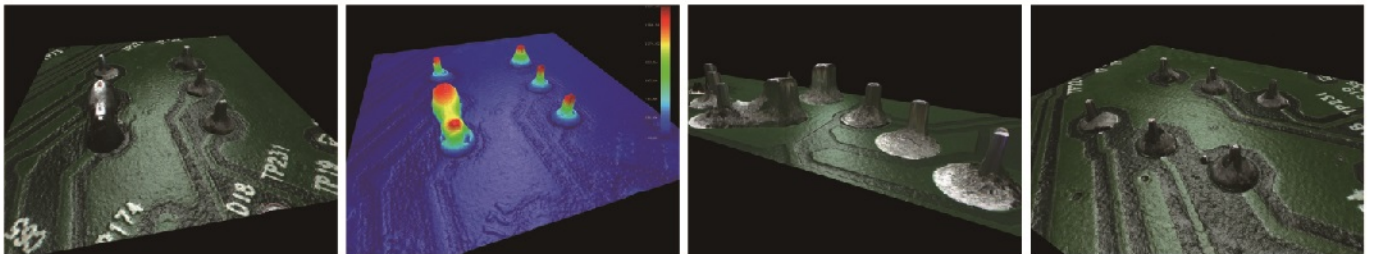
底部相机结构

台架结构可保证相机头在X/Y方向直接移动，从而无需移动轨道。

PEMTRON TH系列相机头位于底部以检测Through Hole，通过大量实践已证明此系统为超稳定、可靠的检测平台。



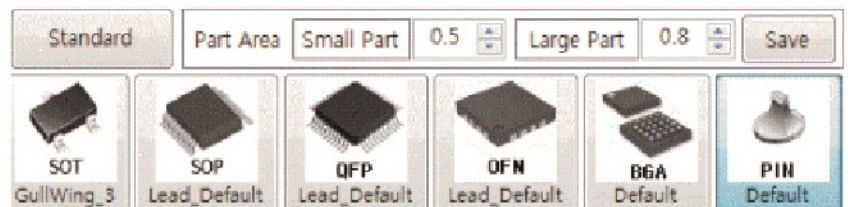
强大的真彩色3D和精准检测结果



编程简易（自动教学功能）

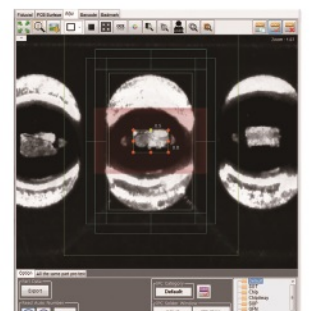
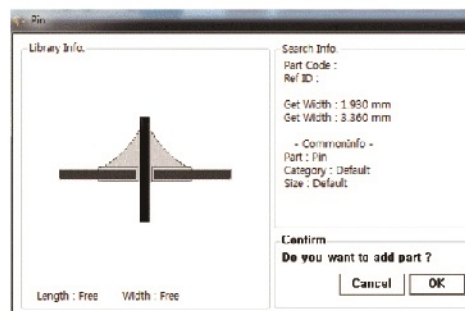
• Pin的标准库应用

先进的3D图像处理技术能够精确识别和测量任何几何形状的元件并自动更新到标准元件库内。
编程简单，调试快速。



• Pin的特殊算法

用户可以自由使用已经存在的不同算法进行编程，且TH系列可以使用右图所示的特殊算法针对Pin。



EAGLE 3D 8800TH Series

3D插件AOI(底部检测)

SPECIFICATIONS

Model		8800TH/THL	
Camera Technology		9MP High Speed B&W Camera	
Detection Types		Polarity(THT, SMD), Offset, Angle, Solder Joint (SMD, THT, ICs), Short circuit(Solder bridges), Solder Paste Inspection	
Lighting		RGB 3D Stroboscopic + Top Lighting	
Resolution		10um	15um
Inspection Speed		18 cm ² /sec	40.05 cm ² /sec
FOV (Field of View)		30 x 30 mm	45 x 45 mm
Height Range		0 – 5.5mm (27mm option)	
Gantry Type		Linear Motor	
PCB Specification	Working Area	Standard	Min. 50 x50mm(2x2inch) / Max. 330 x 330mm(13x13inch)
		Large Type	Min. 50 x50mm (2x2inch) / Max.510 x 510mm (20x20inch)
	PCB Thickness	0.4 ~ 7.0mm	
	Top Clearance	120mm	
Bottom Clearance		100mm	
Installation Requirement	Electrical Requirements	220 – 240 VAC, 50/60 Hz	
	Air Requirement	5 Kg/cm ²	
	PowerConsumption	3.5kW(14A Max)	
Control Unit	Control Method	PC Based Control (Windows 7, 64bit)	
	Monitor	24" LED Panel	
Operating	Operating Temperature	20 - 30 °C (68 – 86 °F)	
Machine Dimension	WxDxH/Weight	Standard	1130 x1385 x 1615(44x55x64 inch) about 820kg
		Large Type	1210 x1565 x 1615(47x62x64 inch) about 930kg
Options		Barcode Reader (1D & 2D) / Touch Panel / UPS(uninterrupted power supply)	

*Specifications subject to change without notice.



PEMTRON TECHNOLOGY MEXICO, S de RL de CV
 Nicolas Bravo #3647, Col. Miguel de la Madrid, Zapopan Jalisco, Mexico CP: 45239
 jaime.arreola@pemtron.com
 Tel: +52 1 333-157-0636

PEMTRON TECHNOLOGIES ASIA PTE LIMITED
 FLAT/RM 1704 17/F SINGGA COMMERCIAL CENTRE 144-151 CONNAUGHT ROAD WEST SAI YING PUN HK
 tao@pemtron.com
 Tel:+852-3590-5175

PEMTRON TECHNOLOGIES (SHENZHEN) CO.,LTD
 RM 409, B Build, GuoRen Building, No.5 Keji Central 3rd Road, Maling Community, Yuehai Street, Nanshan District, Shenzhen, P.R.China
 tao@pemtron.com
 Tel: +86-755-2165-9772

PEMTRON VIETNAM
 Landlord Room03, 12A floor, Viet A building, 09 Duy Tan, Dich Vong, Cau Giay, Hanoi.
 Tel: +82-2-2160-5011(Internet Phone)
 sy78go@pemtron.com



PEMTRON CORPORATION

#1406, (Byuksan Digital Valley VI, Gasan-Dong) 219, Gasan digital 1-ro, Geumcheon-gu, Seoul, Korea. 153-704
 Tel: +82 2 1833 5220
 Fax: +82 2 2627 3770
 sales@pemtron.com

PEMTRON TECHNOLOGY, CORP

15111 S. Figueroa St., Gardena, CA 90248
 Tel: +1 800 850 8764(TROI)
 steve.wong@pemtron.com

PEMTRON Europe GmbH

Kapellenstrasse 11
 85622 Feldkirchen bei Munchen
 Tel: +49 89 877 688 42
 spark@pemtron.com,
 mvielsack@pemtron.com